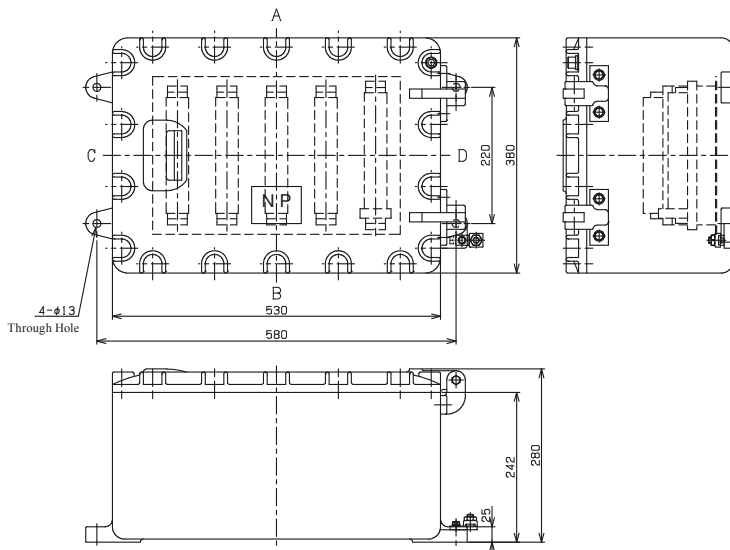
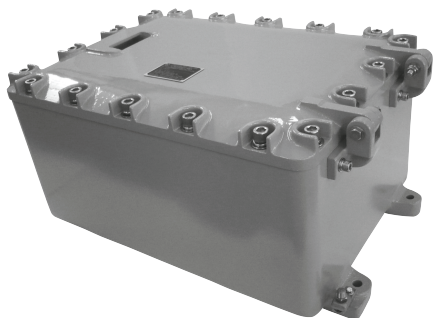


### STH-7



#### Main technical data:

Certification	Type	Certificate No.	Ex mark	Thread
ATEX	Junction Box	TUV IT 17 ATEX 053X	⊕ II 2G Ex db IIB T6 Gb	Type a
IECEX	Junction Box	IECEX CQM 13.0045X	Ex d IIB T6 Gb	Type b
GB	Junction Box	GYJ 14.1436X	Ex d IIB T6 Gb	Type c

#### Standard Specification:

Container Material: Aluminum Alloy Casting  
 Material of Fixing Bolt: Stainless Steel  
 Material of Sealing Packing: Chloroprene Rubber  
 Painting Color: Meramine stove paint 7.5BG6/1.5 Outside  
 Ambient Temperature: -20°C~+40°C Subject to non freezing  
 Relative Humidity: 45%~85%RH Subject to non condensation

Altitude: 1000m or less  
 Weight: 46kg  
 Terminal: Clip-on terminal  
 Rated Voltage: 550V  
 Thread: Types b and c, correspond to M, NPT, and G, threads.  
 Type a correspond to M. NPT, thread.

Please inquire the ratings of the terminal block and the number of installations.  
 Please inquire the size and quantity of cable entry.